

METALMASTER



800 x 1200 x 50mm

Edition : 1.0
Date: (08/25)

Instruction Manual

NITRIDE STEEL WELDING TABLE CART WT16-1208C

Order Code: (W07805)

BEFORE ASSEMBLING

Please read this instruction manual before assembly.



CAUTION

Before assembly please pay attention to the following points in priority;

Confirmation of components: Before assembling, please confirm all parts arrived and are in good order.

Site for assembly: Assemble the welding table on flat, level ground and engage the brake/wheels for stability and safety.

Points for attention when assembling: Please wear gloves to ensure that it can be assembled safely, and use two persons to help in the assembly process.

SAFETY INFORMATION

1. Do not pull this Welding Table, push it when moving.
2. Engage both brakes when this Welding Table is not being moved. This prevents it rolling away.
3. Secure this Welding Table properly before moving with a forklift.
4. Do not tow this Welding Table with power equipment.
5. Do not alter this Welding Table in any manner. For Example. Do not weld external lock bars or attach electrical equipment.
6. Before locking the Welding Table, ensure the drawers are completely closed in order for the lock bars to work properly.



CAUTION: Do not attach or mount this product to a vehicle. This may cause personal injury or product damage. Mounting this product to any vehicle in any manner will void warranty.



CAUTION: Keep the welding table on a level surfaces. The product may become unstable and tip if stored or moved on an un-level surface, which may cause personal injury or product damage.



CAUTION: Do not stand on this product. You may fall which may cause personal injury or product damage.



CAUTION: Always engage the wheel brakes when the welding table is in use or being stored to prevent movement and rolling.



CAUTION: Beware of hazards such as falling parts, clamps or heavy objects.



CAUTION: Use safety shoes as all times.

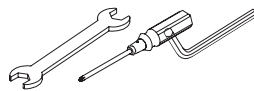


CAUTION: When raising and lowering the welding table keep body parts away from moving parts. Serious injury can occur. Always secure the safety pin (36) in place when the welding table is in use.



CAUTION: Do not exceed the welding table's weight capacity. Always secure objects and ensure the load is evenly balanced.

TOOLS & ASSISTANCE NEEDED

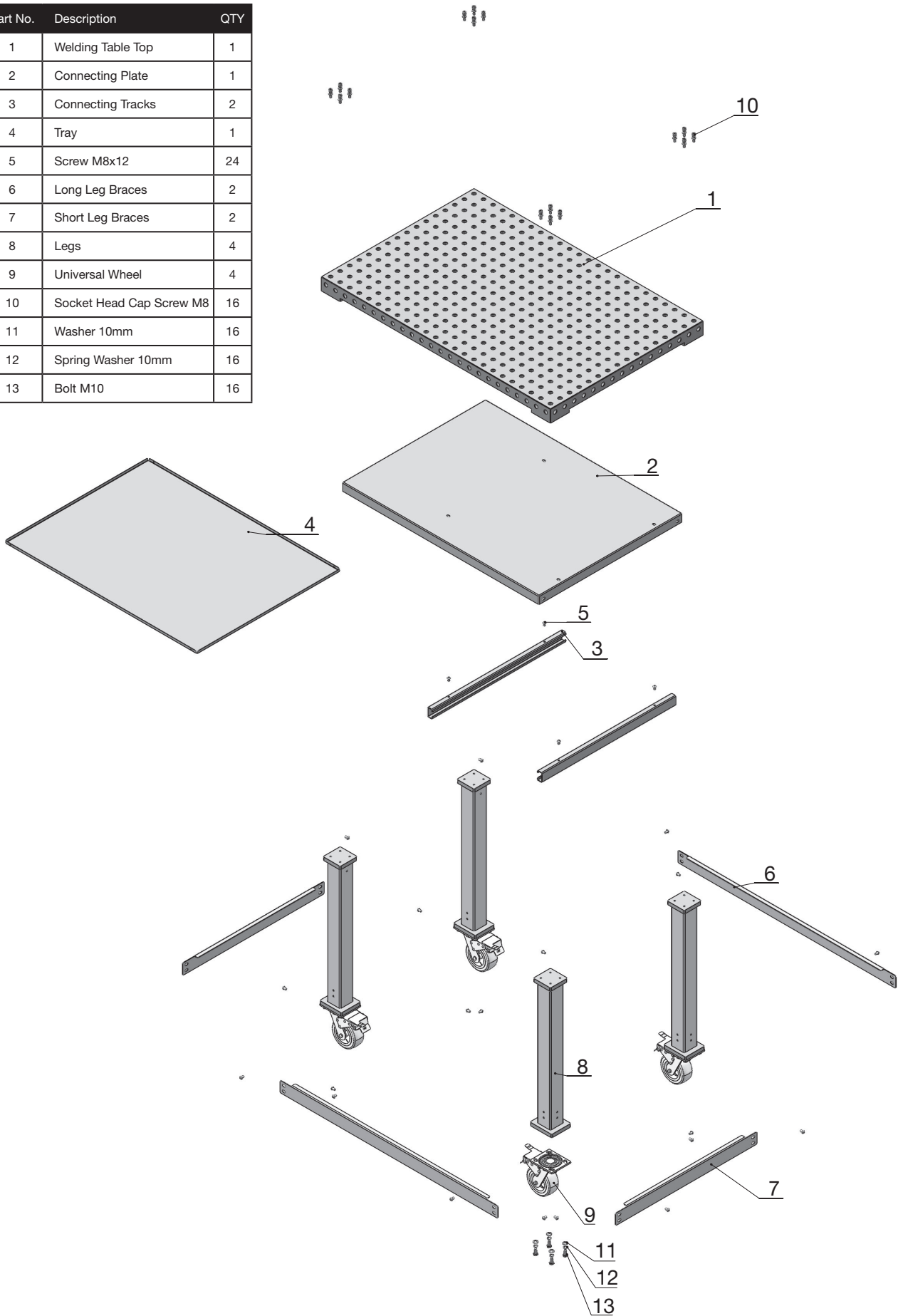


Hex Key, Spanner and a Philips Head Screwdriver

*Tools not included



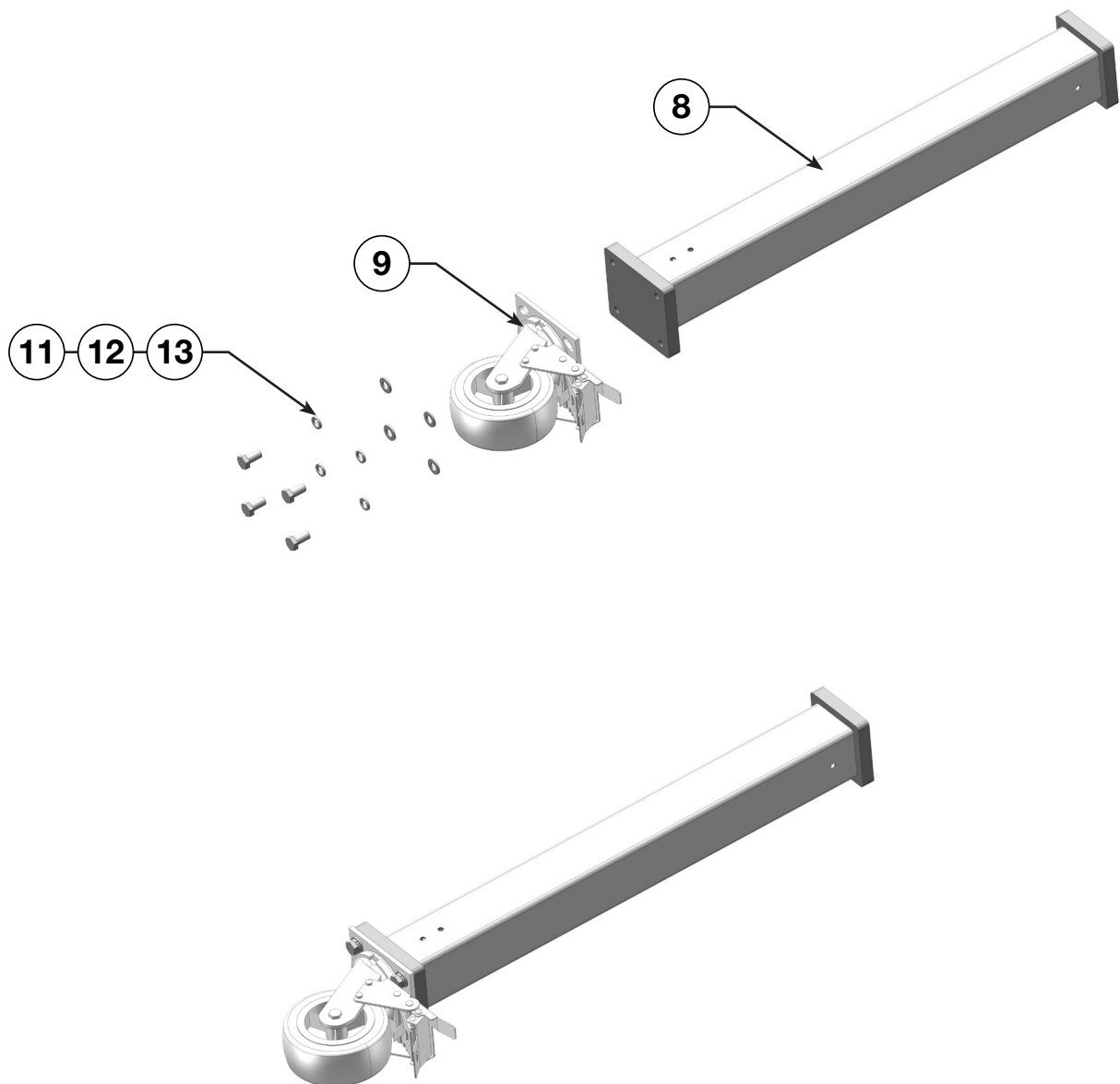
Part No.	Description	QTY
1	Welding Table Top	1
2	Connecting Plate	1
3	Connecting Tracks	2
4	Tray	1
5	Screw M8x12	24
6	Long Leg Braces	2
7	Short Leg Braces	2
8	Legs	4
9	Universal Wheel	4
10	Socket Head Cap Screw M8	16
11	Washer 10mm	16
12	Spring Washer 10mm	16
13	Bolt M10	16



STEP 1.

Attach the Wheels to the Legs

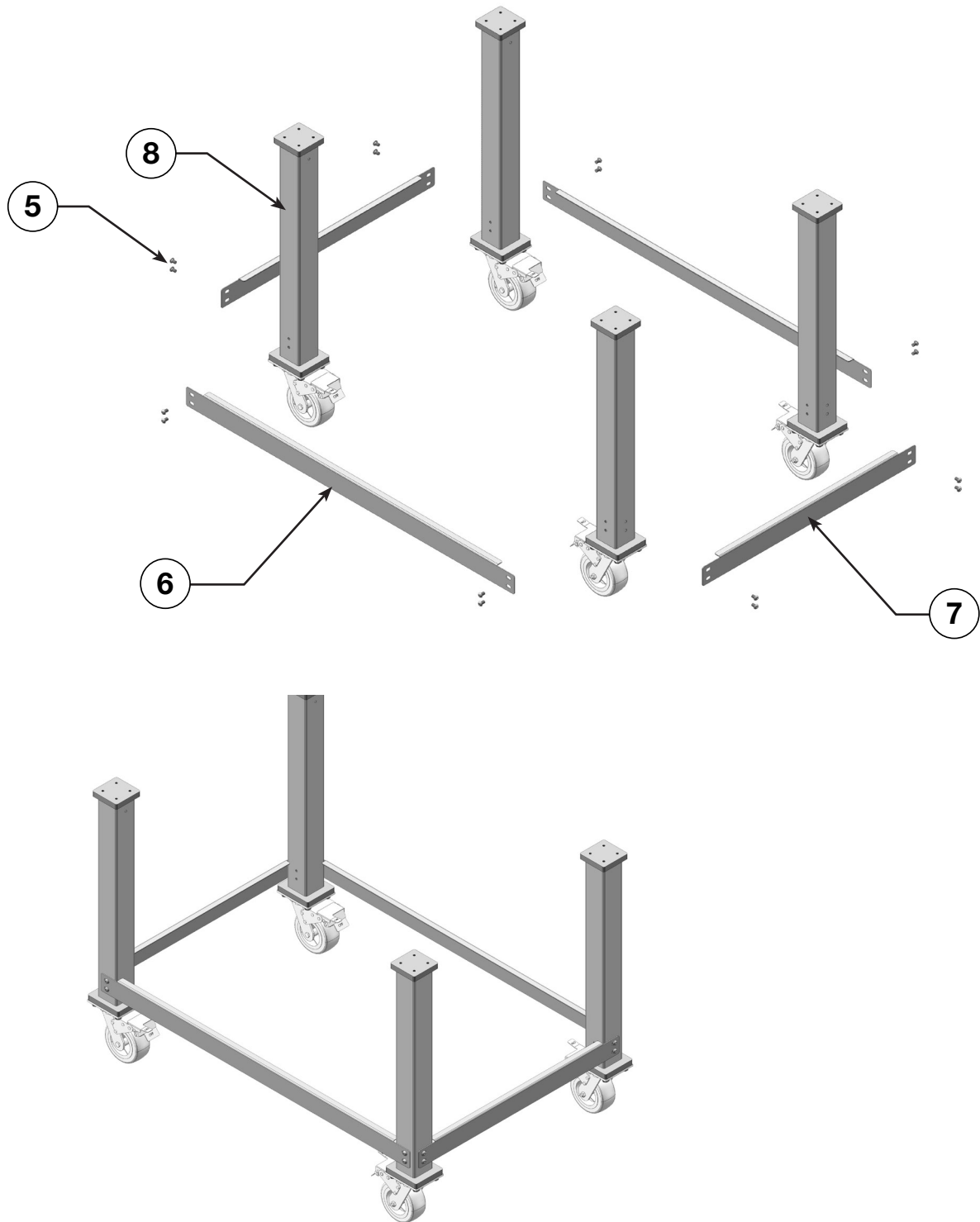
Position each Universal Wheel (#9) in-line with the holes on bottom end of each Leg (#8) and attach using 16 x M10 Bolts (#13), 16 x 10mm Spring Washers (#12) & 16 x 10mm Washers (#11) attached the 4 x Universal Wheels (#9) to the 4 x Legs (#8) as shown below.



STEP 2.

Attach the Leg Braces to the Legs

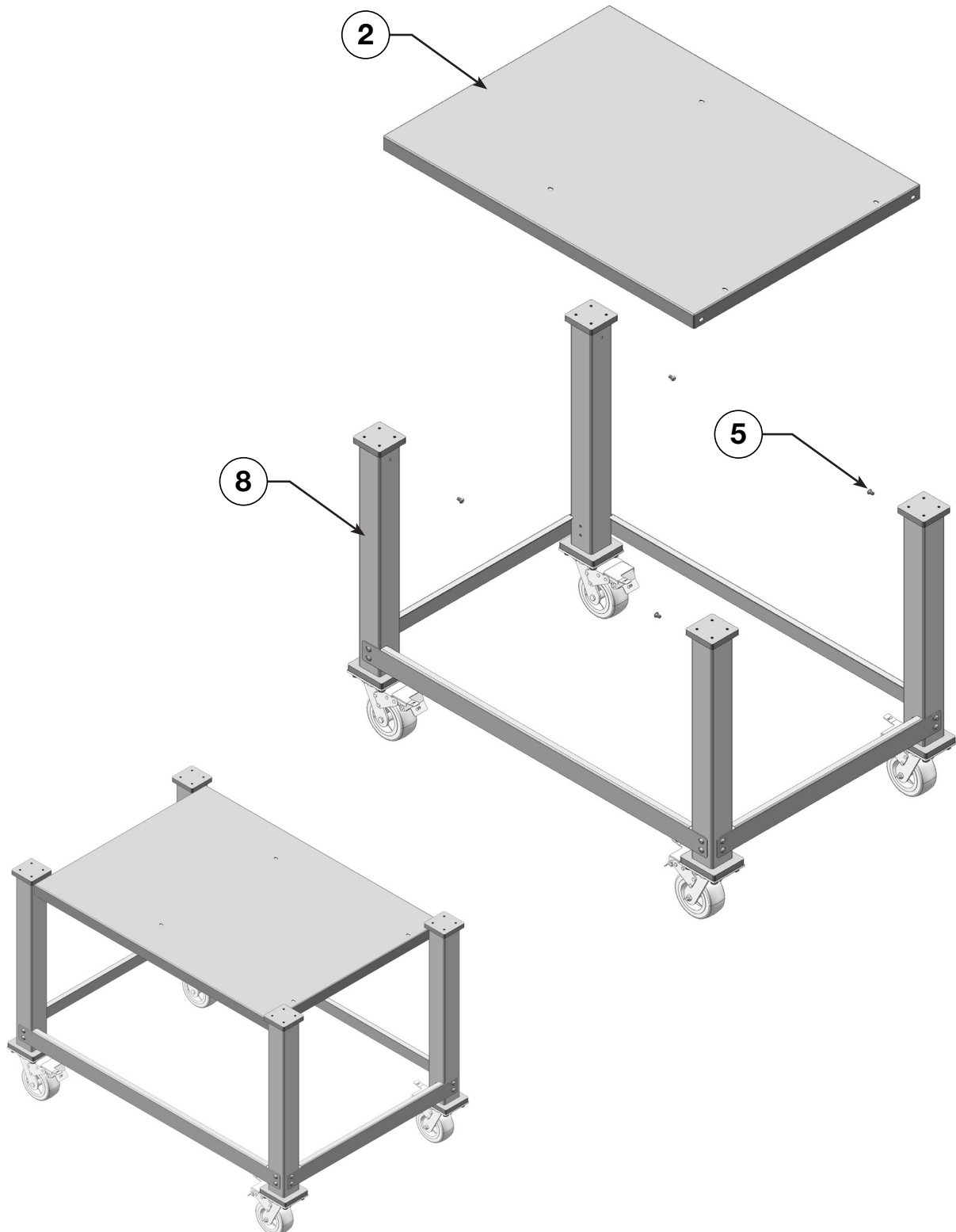
Assemble the 2 x Long Leg Braces (#6) and 2 x Short Leg Braces (#7) to the bottom of the legs (#8) in-line with the holes using 16 x M8x12 Screws (#5) as shown below.



STEP 3.

Attach the Leg Braces to the Legs

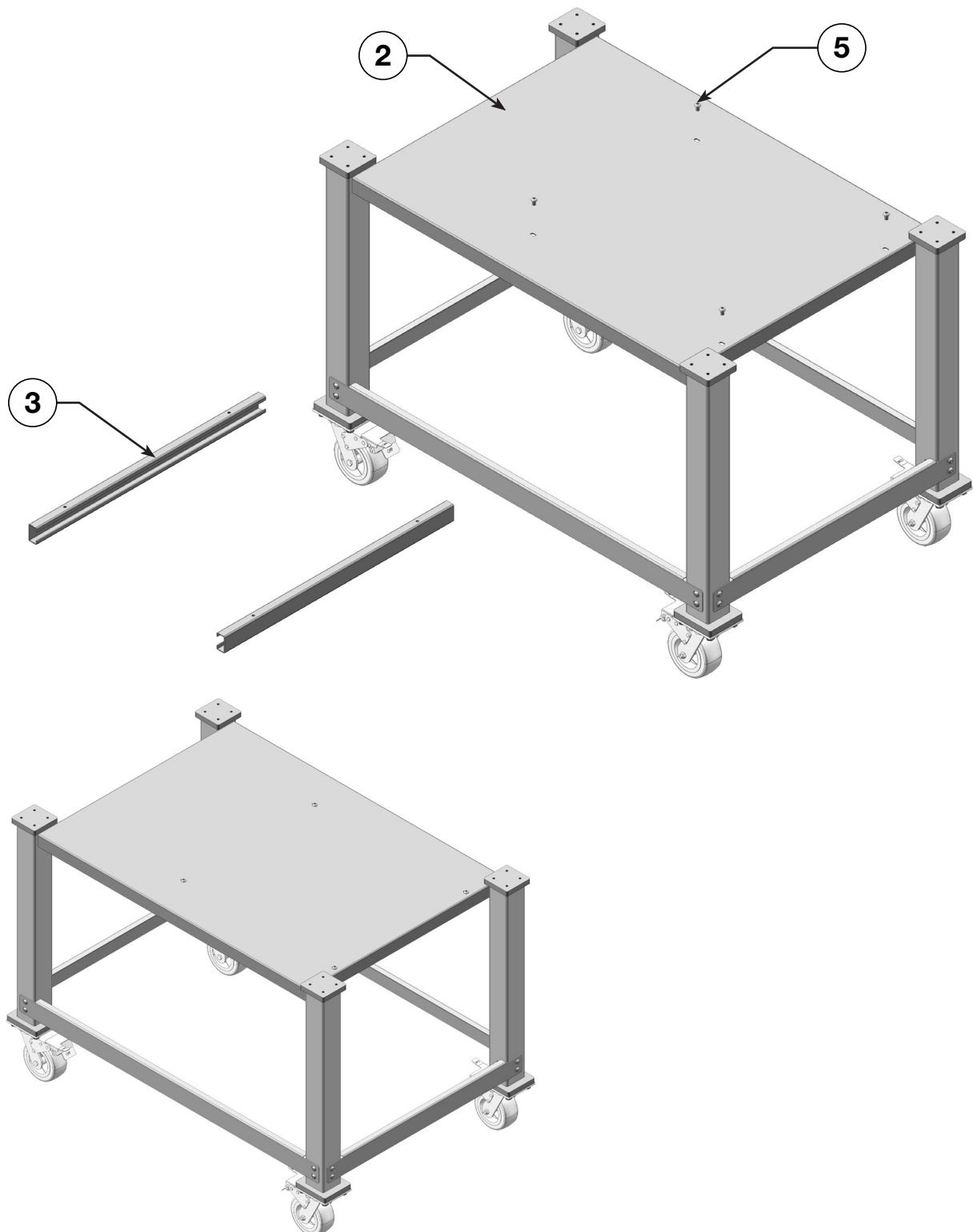
Assemble the Connecting Plate (#2) to the inner sides of the legs (#8) using 4 x M8x12 Screws (#5) as shown below.



STEP 4.

Attach the Connecting Plates to the Legs

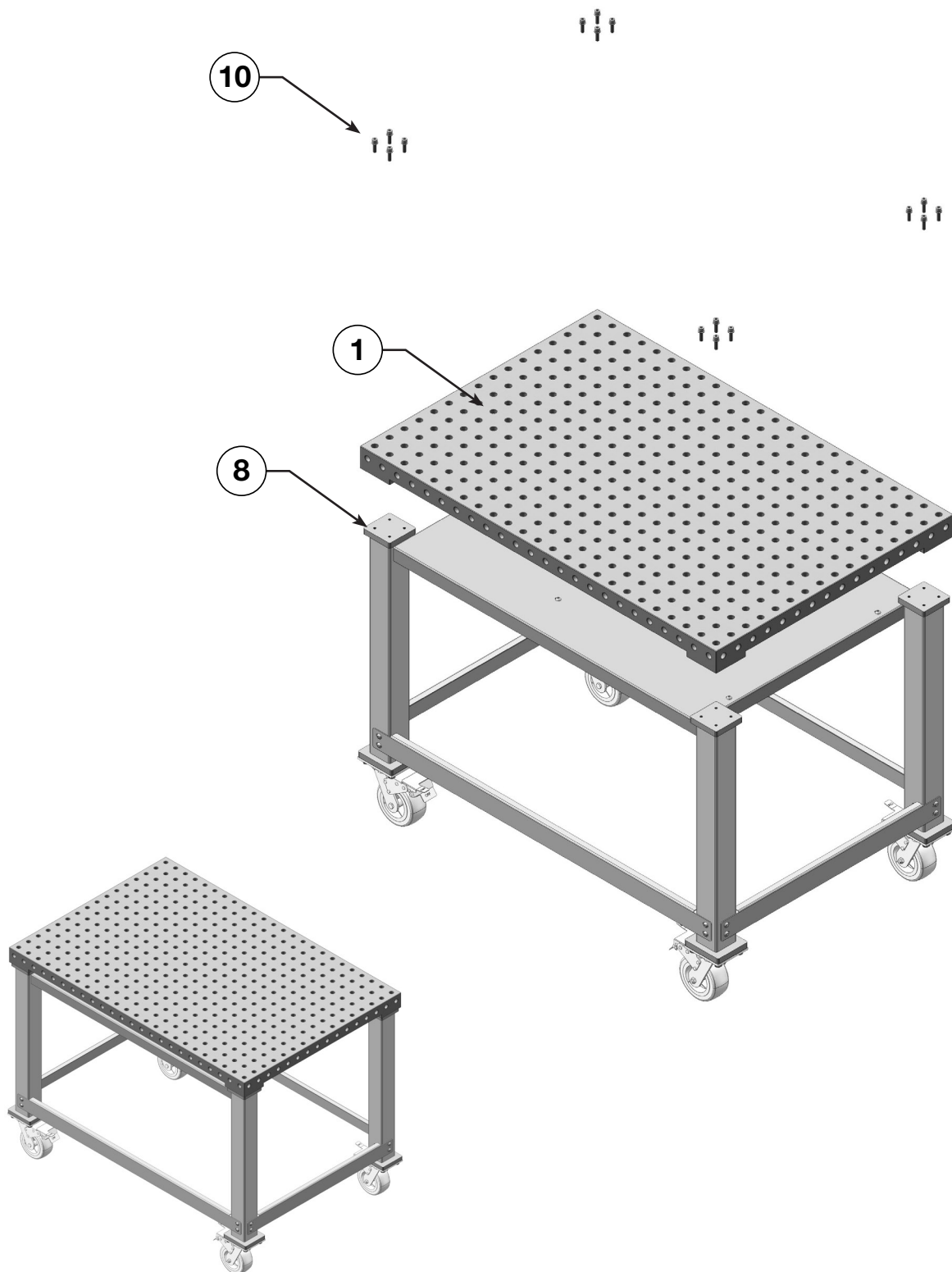
Assemble the Connecting Tracks (#3) to the bottom of the Connecting Plate (#2) using 4 x M8x12 Screws (#5) as shown below.



STEP 5.

Attach the Connecting Plates to the Legs

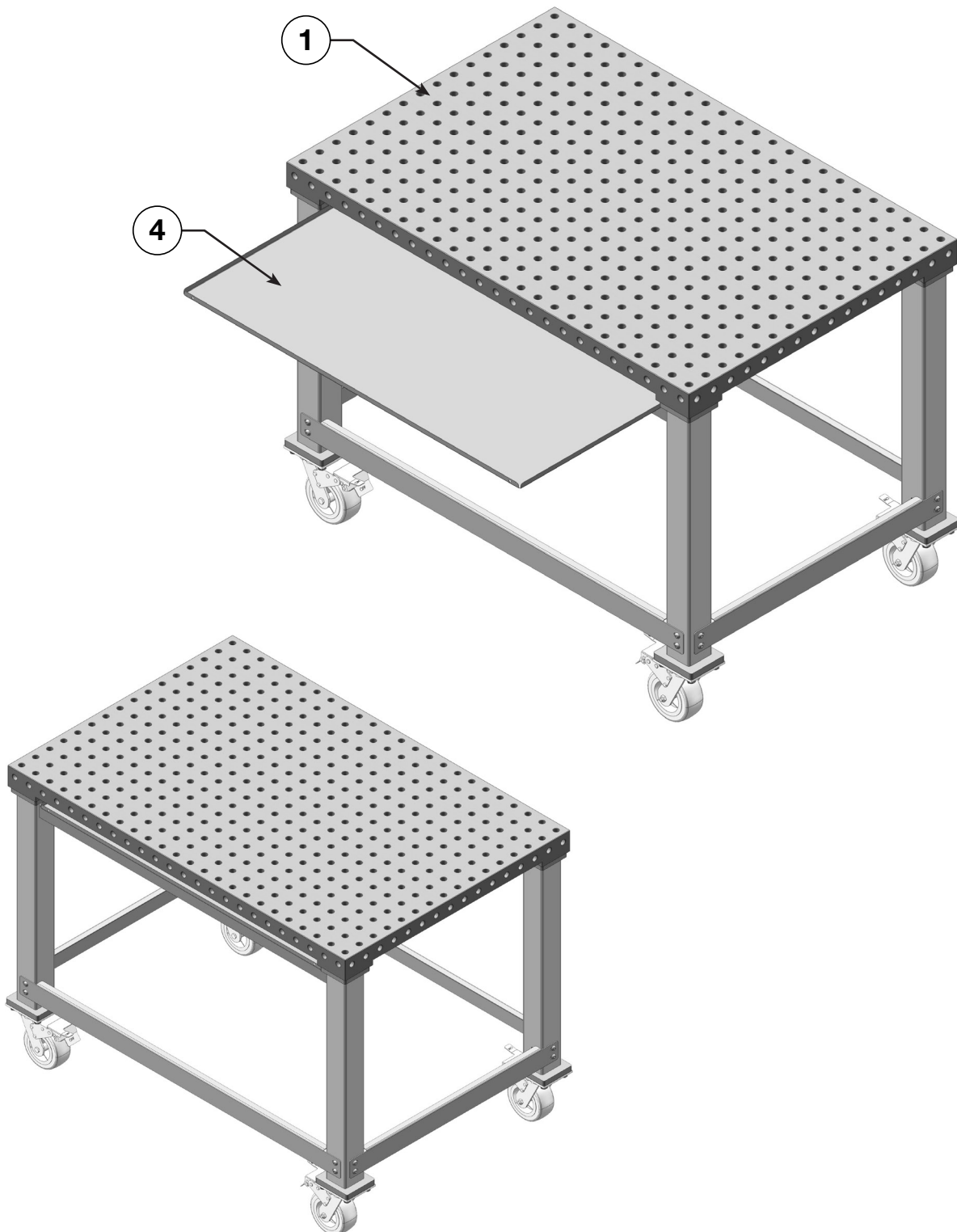
Assemble the Welding Table Top (#1) to the top of the Legs (#8) using 16 x M8 Socket Head Cap Screws (#10) as shown below.



STEP 6.

Slide the Tray under Welding Table

Slide the Tray (#4) underneath the Welding Table Top (#1) as shown below.





ENVIRONMENT PROTECTION

Recycle unwanted materials instead of disposing of them as waste. All tools, accessories and packaging should be sorted, taken to a recycling centre and disposed of in a manner which is compatible with the environment. When the product becomes completely unserviceable and requires disposal, drain any fluids (if applicable) into approved containers and dispose of the product and fluids according to local regulations.

IMPORTED BY

HARE&FORBES
MACHINERYHOUSE

Australian Distributor

Hare & Forbes
Machineryhouse
Sydney - Melbourne
Adelaide - Brisbane - Perth

Ph: 1300 202 200
www.machineryhouse.com.au

MACHINERYHOUSE

New Zealand Distributor

Machineryhouse
Auckland
Christchurch

Ph: 0800 142 326
www.machineryhouse.co.nz